

Specifications

DESCRIPTION

- Stainless Steel construction
- Flexible supply lines with 3/8" or 9/16" compression fittings
- Includes Red/Blue indicators

FLOW

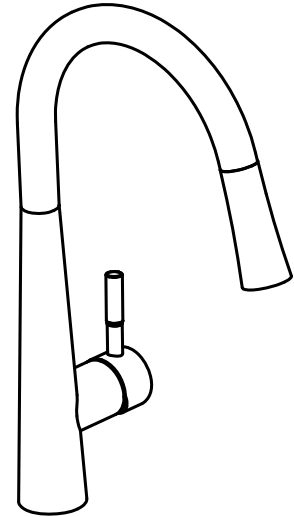
- Water usage is limited to these maximum flow rates as indicated by the corresponding product markings
- North America: 1.8 gpm max (6.8L/min) at 60psi
- California: 1.8 gpm max (6.8L/min) at 60psi

CARTRIDGE

- Ceramic disk cartridge

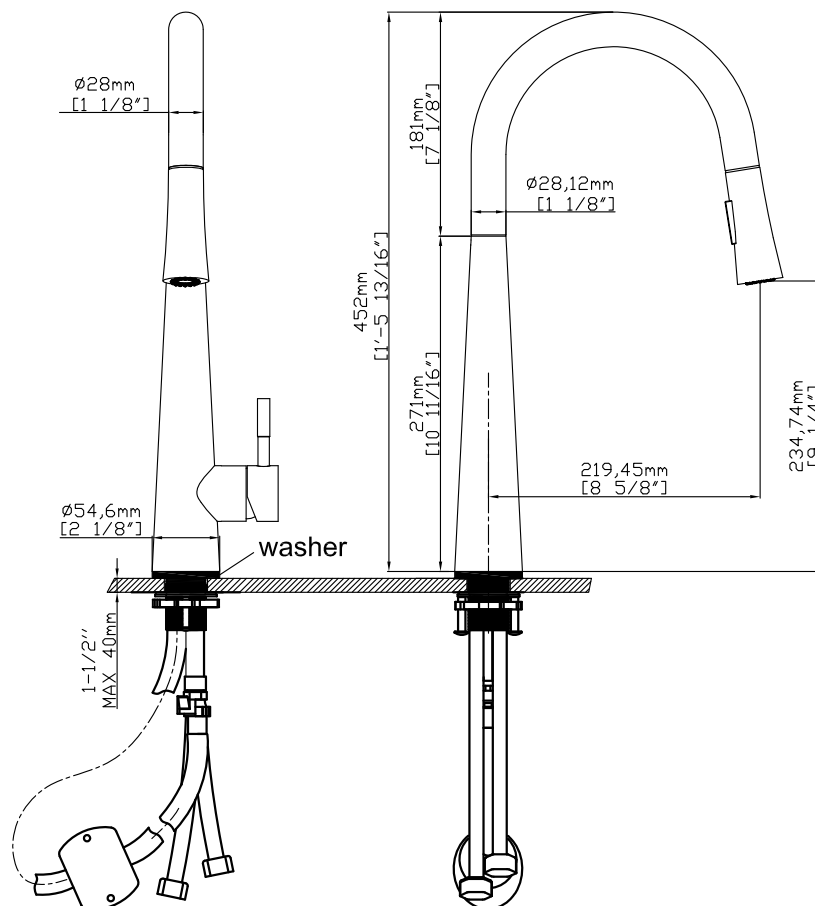
STANDARDS

- Certified to CUPC
- Certified to AB1953
- Certified to NSF/ANSI 61



Pull out Kitchen Faucet

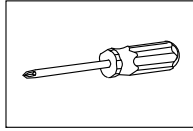
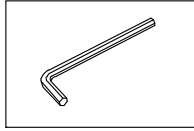
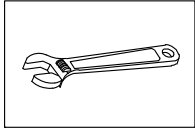
NOTE: THIS FAUCET IS DESIGNED TO BE INSTALLED THRU 1 HOLE, $\Phi 1\text{-}3/8"$ ($\Phi 35\text{mm}$) MIN.



Note: Dimensions are for reference only. Detailed information is in accordance with the final product.

Pull out Kitchen Faucet Installation

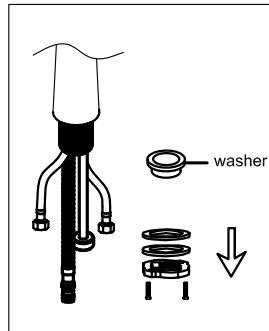
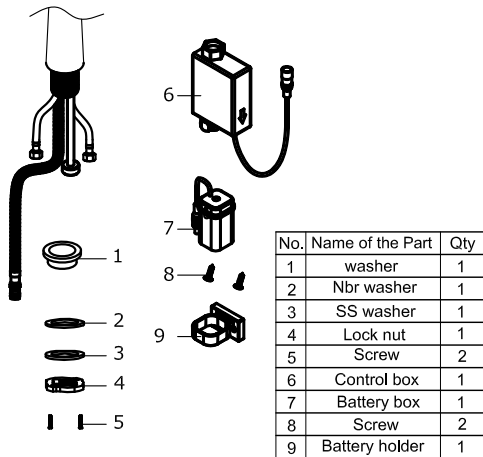
INSTALLATION MANUAL Tools You Will Need :



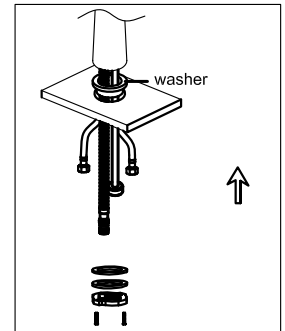
Adjustable wrench Hexagon wrench Phillips Screwdriver

Notes before installation :

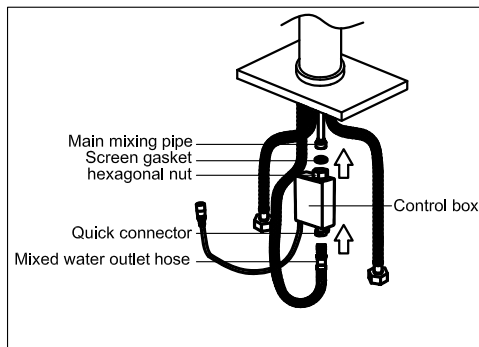
1. Please check that all components are present.
2. Before installation ensure that all feed lines are clear of debris and on/off valve is present.
3. Ensure water pressure is between 20-125 PSI (includes combination of hot and cold feed lines).
4. Pictures in the manual are general in content and may not represent exactly your purchased faucet. If you are having difficulties please contact a professional plumber.
5. If you will be away from home for an extended period you should shut off the main water supply.



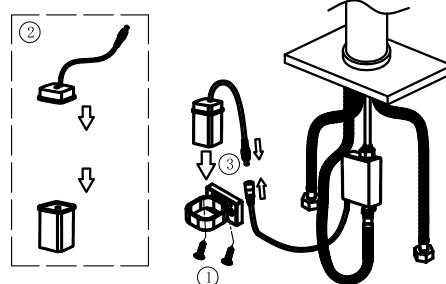
1. Remove locking-nut, metal and rubber washer and hose connector if installed.



2. Install faucet through center hole, re-install rubber and metal washer followed by the lock-nut. Re-install hose connector if removed insuring small rubber washer is also installed. Using a screwdriver tighten the lock-nut screws so that the faucet is secure and will not twist.



3. Install the control box on the main body, tighten the hexagonal nut of the control box with the hot and cold flexible hoses of the faucet body, insert the hot and cold flexible hoses connector into the quick-in connector of the control box;



4. ①. Fix the battery holder on the wall with screws in an appropriate position;
- ②. Unscrew the battery box cover, remove the box cover, put the battery into the box and lock it tightly;
- ③. Put the battery box into the battery holder, and put the connecting wire ends of battery box with the connecting wire ends of control box together.

5. Note:

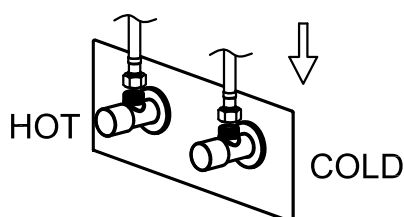
- a. When installing the battery box, please avoid direct contact with water and do not install it in a humid place;
- b. When the battery bracket is installed, the arrow on the surface faces upward, and the installation height should not be higher than 15cm from the cabinet floor;
- c. The battery needs to be installed according to the requirements of the positive and negative poles, and cannot be installed reversely.

8. How to use touch

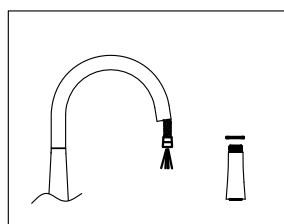
- ①. Open the faucet by using the handle;
- ②. Tap the touchable area of the faucet to control the state of the water outlet switch of the faucet;
- ③. The faucet will automatically shut down after the water is discharged for more than 3 minutes to save water.

Note:

- a. If the faucet is not used for a long time, the handle should be closed.
- b. When the handle is closed, the touch switch will still operate, but there is no water coming out. This is a normal phenomenon.
- c. When the battery power of the touch module is low or exhausted, the touch switch will remain on. You can control the handle to use the faucet directly. The touch function will resume after replacing the battery.



6. Attach flexible hose to water supply.



7. Hold on to the spray-head hose, unscrew spray head and remove it along with the rubber washer. Turn on the faucet to flush the hose and feed line for 1-minute to flush debris. Turn off faucet and re-install the rubber washer and spray head.